

EverGreen Heights Townhomes

offer a variety of amenities, including:

- ❖ Located Near: Canterbury Park, Mystic Lake Casino, Valleyfair, Renaissance Festival
- ❖ Convenient Shopping: Target, Cub Foods, Lowe's, Restaurants within 2 miles
- ❖ Easy Access to Hwy 169
- ❖ 3 Parks/Playgrounds
- ❖ Optional Laundry Rental or Onsite Laundry Room
- ❖ Onsite Management and Maintenance
- ❖ Part of EverGreen Real Estate Development Corporation

Quality Housing / Affordable Rent

Special Rental Community Programs require income certification to qualify for our low rental rates.

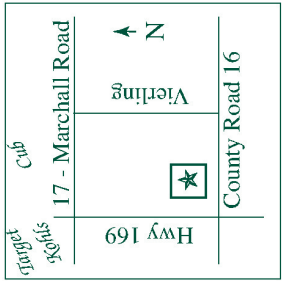
Please ask how you can qualify.



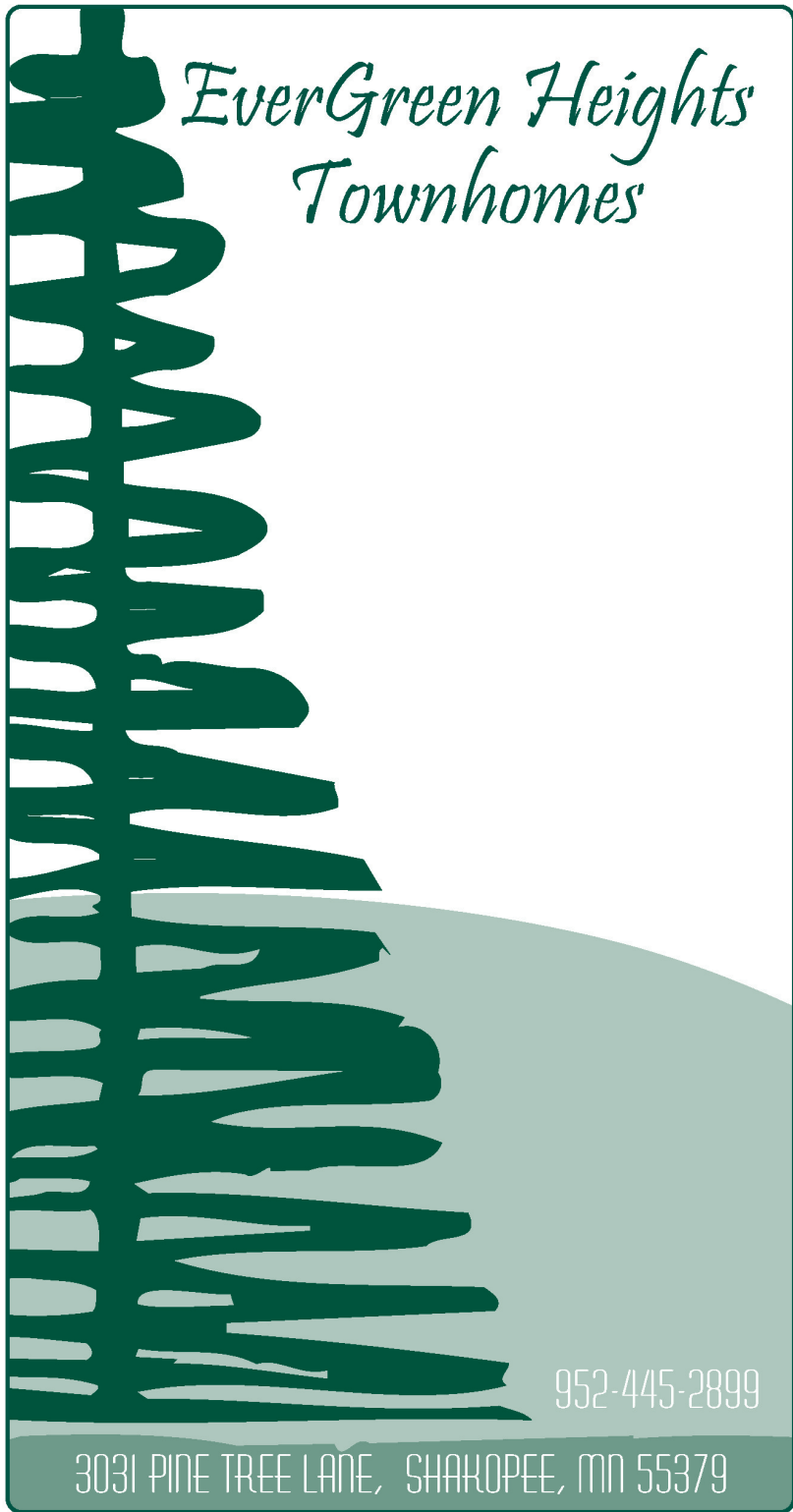
EverGreen Heights Townhomes

3031 PINE TREE LANE

SHAKOPEE, MN 55379



EverGreen Heights
Townhomes



952-445-2899

3031 PINE TREE LANE, SHAKOPEE, MN 55379

WELCOME TO

EverGreen Heights Townhomes

Now you can enjoy quality housing at an affordable price. Two and three bedroom townhomes, and a specially designed four bedroom handicapped home.

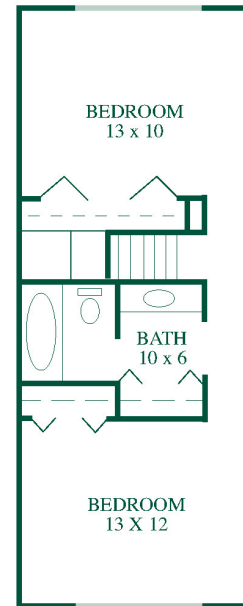
- ❖ Two Story Townhomes
- ❖ Private Entry
- ❖ Attached Garage
- ❖ Atrium Door to Patio Area
- ❖ Large Kitchen with Dishwasher
- ❖ Forced Air Furnace
- ❖ Central Air Conditioning
- ❖ Great Closet Space
- ❖ Decorative Lighting
- ❖ Neutral Color Carpeting

EverGreen Heights Townhomes

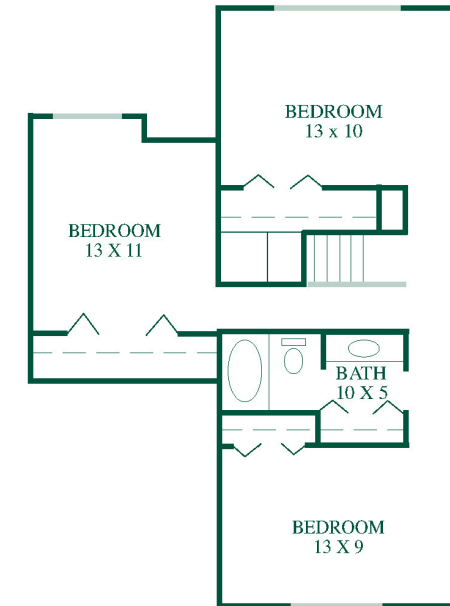
Phone: 952-445-2899 • Fax: 952-233-3627

Website: www.evergreenredc.com

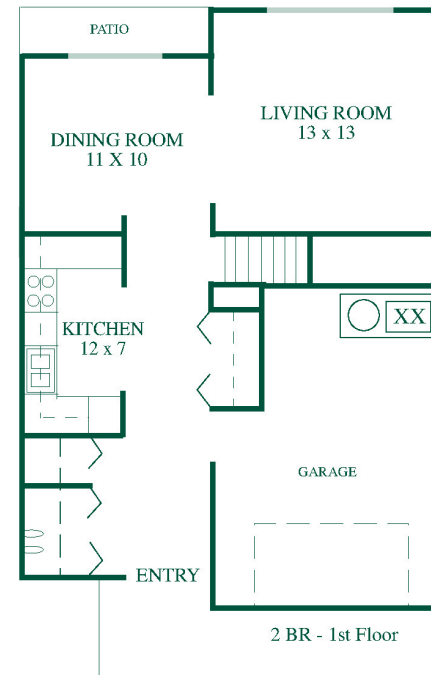
E-mail: evergreenheights@comcast.net



2 BR - 2nd Floor

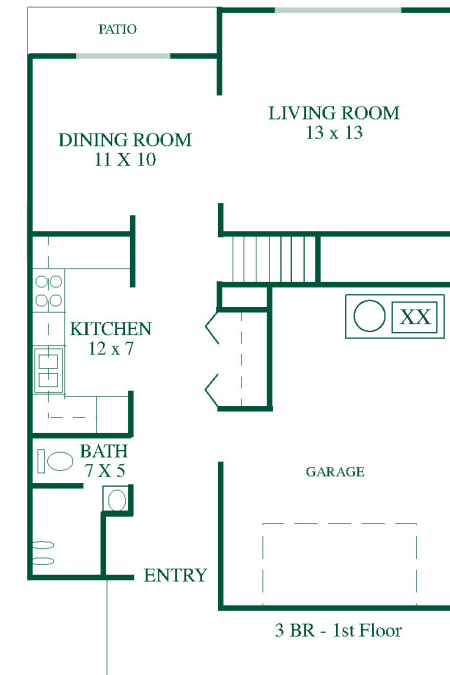


3 BR - 2nd Floor



2 BR - 1st Floor

2 BR TOWNHOME
1,070 Sq. Ft.



3 BR - 1st Floor

3 BR TOWNHOME
1,260 Sq. Ft.