

Welcome to

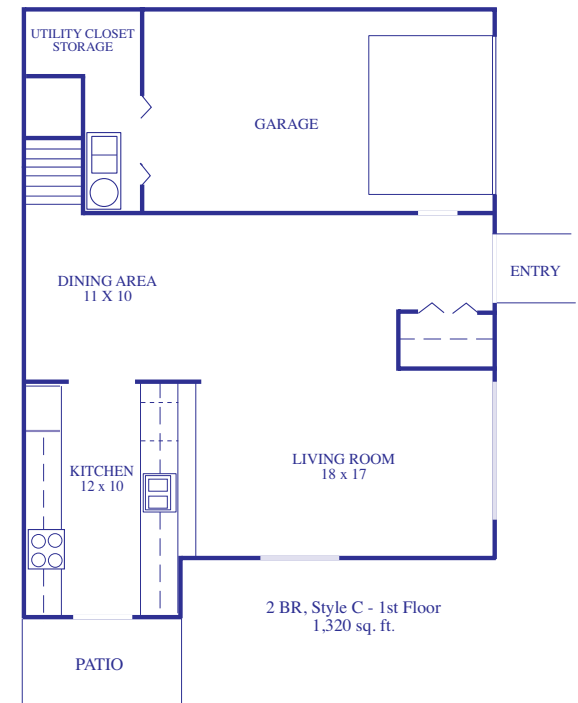
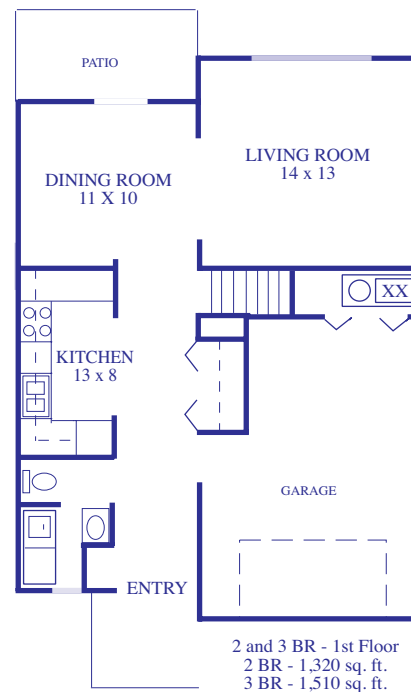
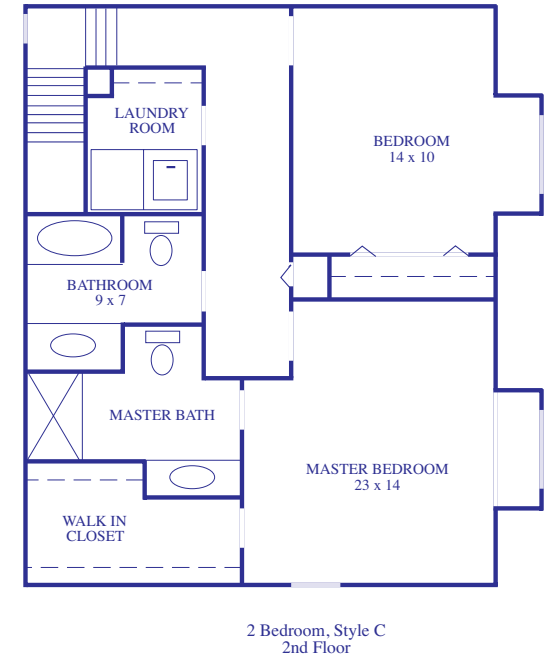
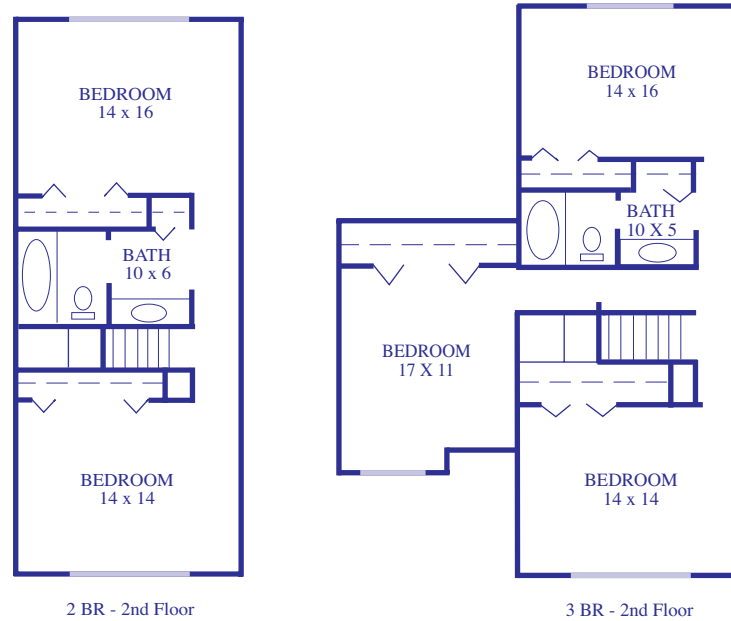
# River Bend townhomes

Now you can enjoy quality housing at an affordable price. New two and three bedroom townhomes, and a specially designed two bedroom handicapped home.

- ❖ New Two Story Townhomes
- ❖ Attached Garage
- ❖ Large Kitchen with Dishwasher
- ❖ Forced Air Furnace
- ❖ Central Air Conditioning
- ❖ Laundry Hook-ups
- ❖ Great Closet Space
- ❖ Decorative Lighting
- ❖ Neutral Color Carpeting
- ❖ Unique Floor Plans



Professionally Managed



## *River Bend townhomes*

offer a variety of amenities, including:

Private Entry

- Atrium Door to Patio or Deck Area
- Adjacent to City Park
- Large Front Lawn
- New Childrens Playground
- Easy Access to Hwy 169
- Convenient to:  
Target/K-Mart/Cub Foods  
City Pool and Community Center
- Located near: Canterbury Park,  
Mystic Lake Casino, Valleyfair,  
Renaissance Festival

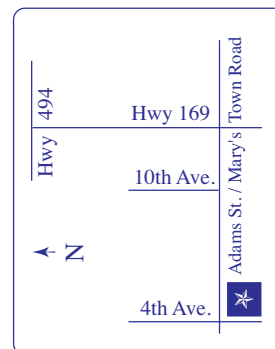
### **Quality Housing / Affordable Rent**

Special Rental Community Programs  
require income certification to qualify  
for our low rental rates.

Please ask how you can qualify.

*River Bend townhomes*

1200 4th Ave W.  
Shakopee, MN 55379



**952/ 496-0083**

**1200 4th Ave. W. Shakopee, MN 55379**